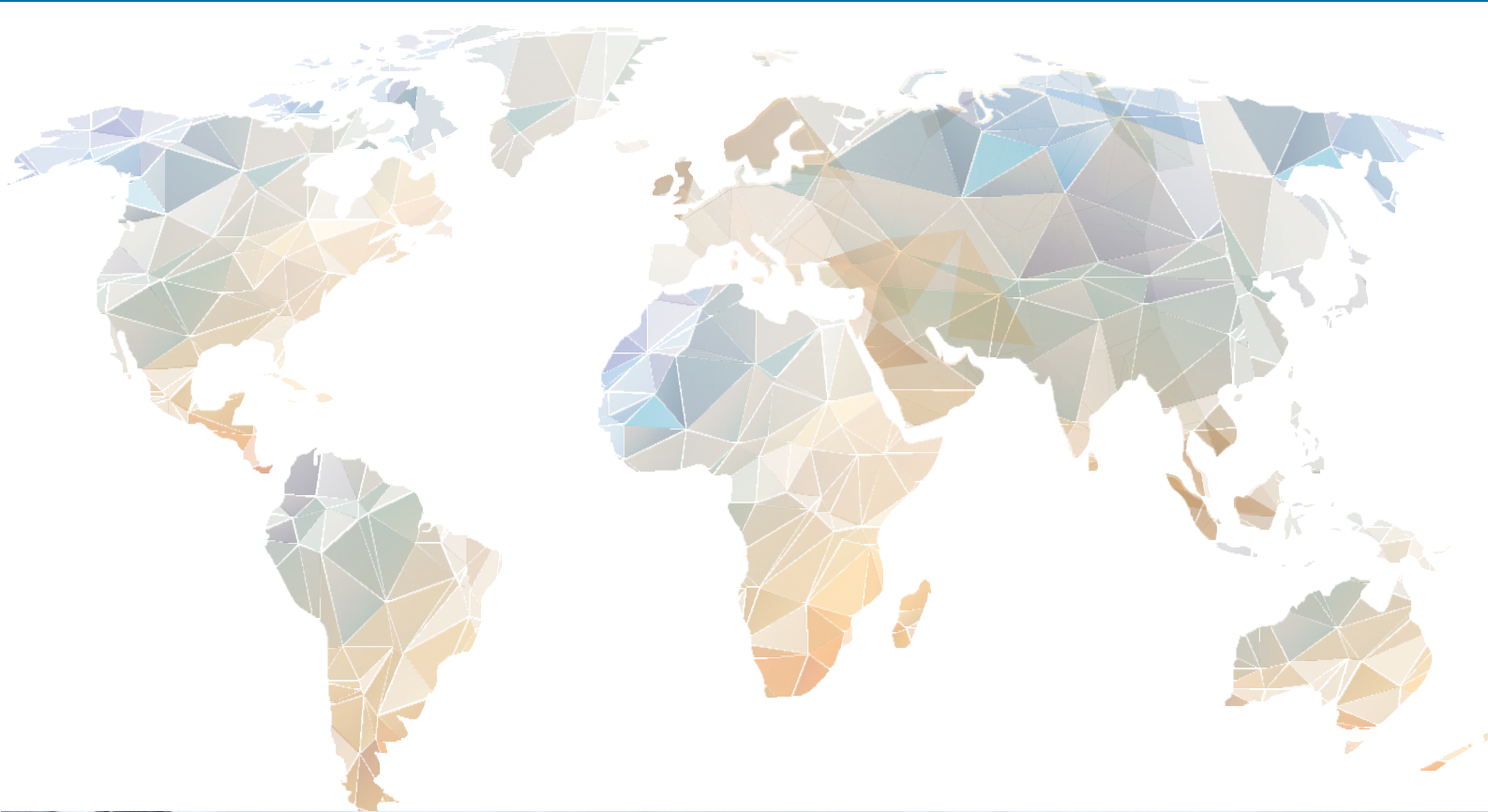




WORLD WIDE EQUIPMENT



Middle East



WWE 231

GENERAL

Year Built	: 2025
Flag	: Singapore
Class	: Registro Italiano Navale (RINA)
Length	: 230'-00" (70.104M)
Breadth	: 70'-00" (21.336M)
Depth	: 14'-00" (4.267M)
Draft (empty)	: 0.8m/2.6ft
Summer draft	: 3.4m / 11.1ft
DWT	: 3900 Ton
Clear deck area	: 910 m2
Deck load	: 20 T/M2
Bulkheads	: 2 Longitudinal / 7 Transverse

OUTFITINGS

Mooring bollards	: 08 x double bits / 20 T SWL
Generator	: NES 150EH, 125 / 150KVA
Smit Brackets	: 4 x 100T SWL
Spud holes	: 4 x 1.25m diameter
Fair leads	: universal box roller type
Navigation lights	: Solar powered

SPUD 2X

Spud length	: 2 nos x 24.2 meter
spud dia	: 1.20 meter dia

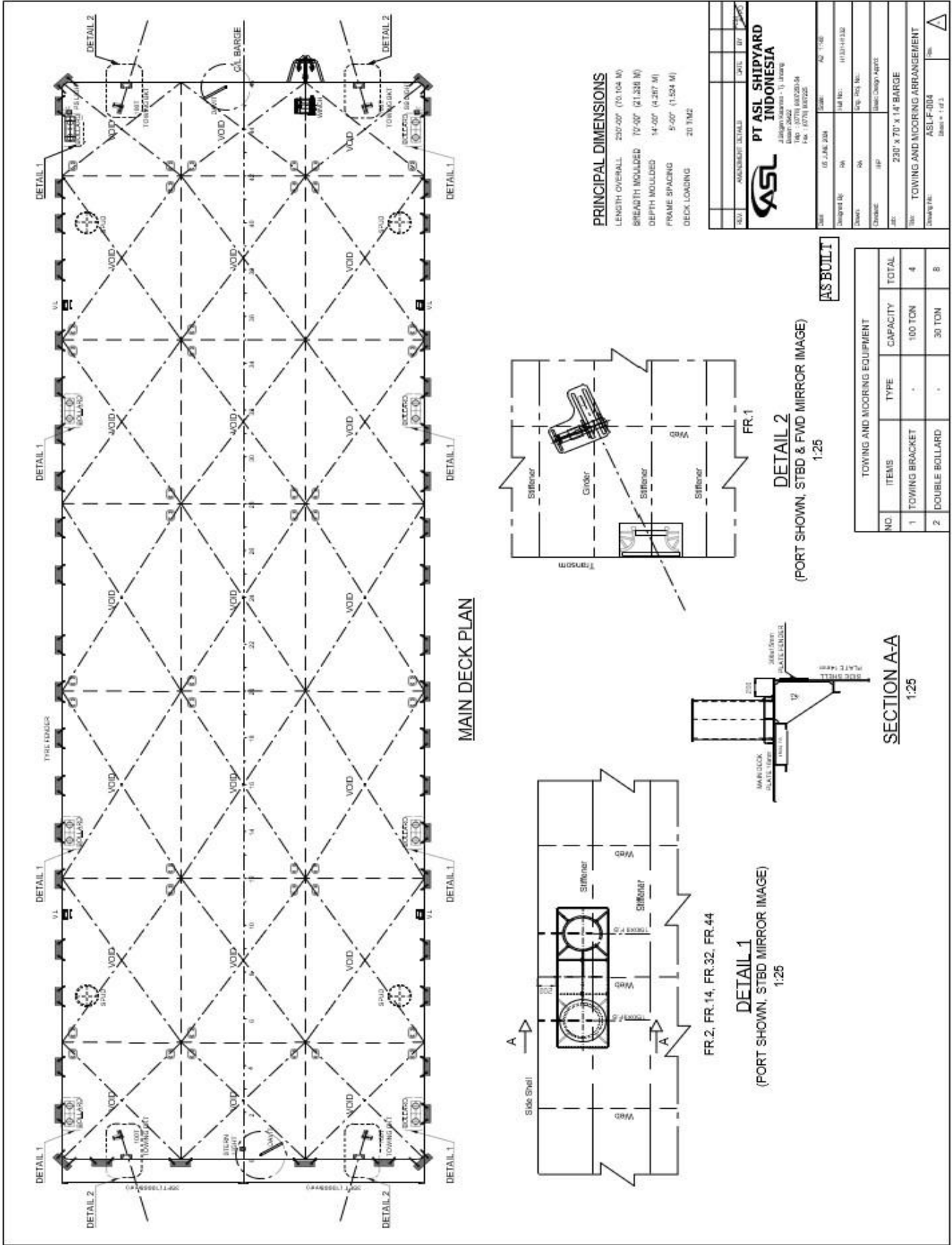
HYDRAULICALLY OPERATED SPUD SYSTEM

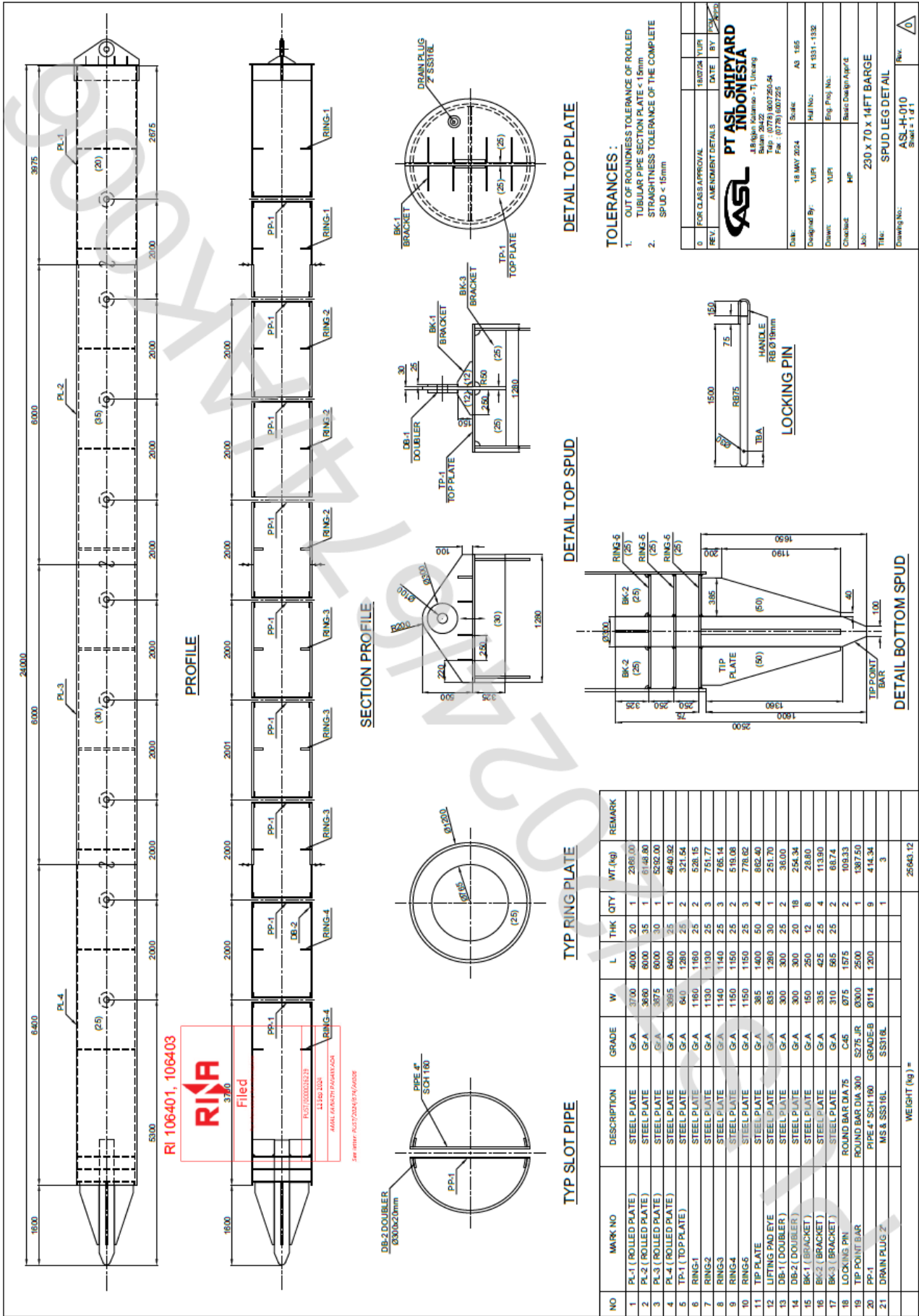
spud length spud	: 2 nos x 24.2 meter
dia	: 1.23 meter dia
Spud wire	: 2 x 42mm dia x 16 meter
Hyd cylinder type	: Double acting
Cylinder speed	: 1000mm / min
HPU Power Speed	: 15 KW
	: 1480 RPM
Max Pressure	: 250 Bar
Hyd Oil Tank	: 255 Litter

Crawler crane available upto 600 Ton
experienced barge crew in compliance with STCW



PROFILE AND MAIN DECK PLAN





For further details:
 LKL Middle East Project Management Services LLC
 info@lklme.com
 +971563734526
 United Arab Emirates